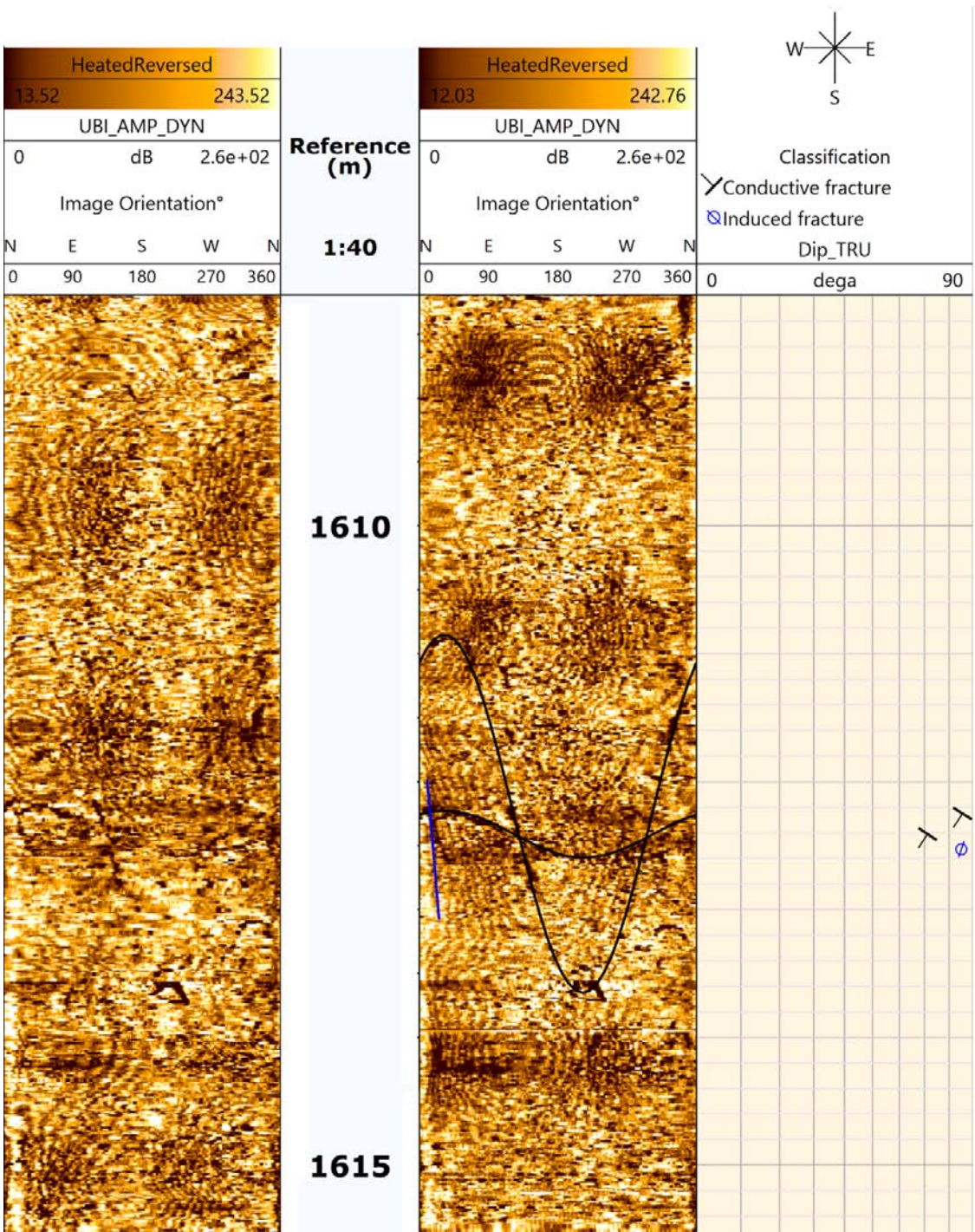


Data products

Figures S1, S2, S3, S4, S5, S6, S7, S8: Pre-frac (left) and Post-frac (right) acoustic images of the eight test sections along with orientation of induced axial and steeply dipping fractures. The hydraulically induced fractures frequently appear as traces on a somewhat noisy acoustic image. They are identified and marked for clarity. Depth refers to the measured depth (m) in each case.

Figure S1:



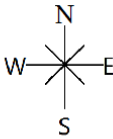
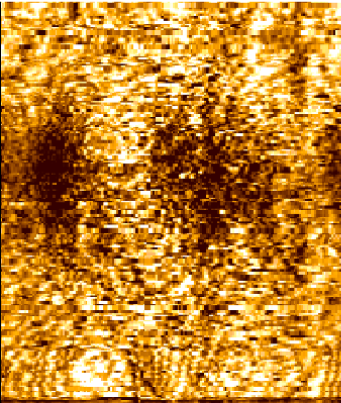
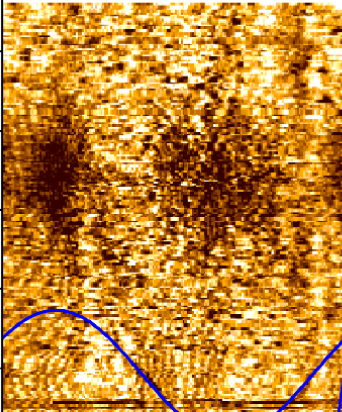

HeatedReversed					Reference (m)	HeatedReversed					 Classification
13.52		243.52				12.03		242.76			
UBI_AMP_DYN						UBI_AMP_DYN					
0		dB				0		dB			
Image Orientation°					1:40	Image Orientation°					Induced fracture Dip_TRU dega
N	E	S	W	N		N	E	S	W	N	
0	90	180	270	360		0	90	180	270	360	
					1865						



Figure S3:

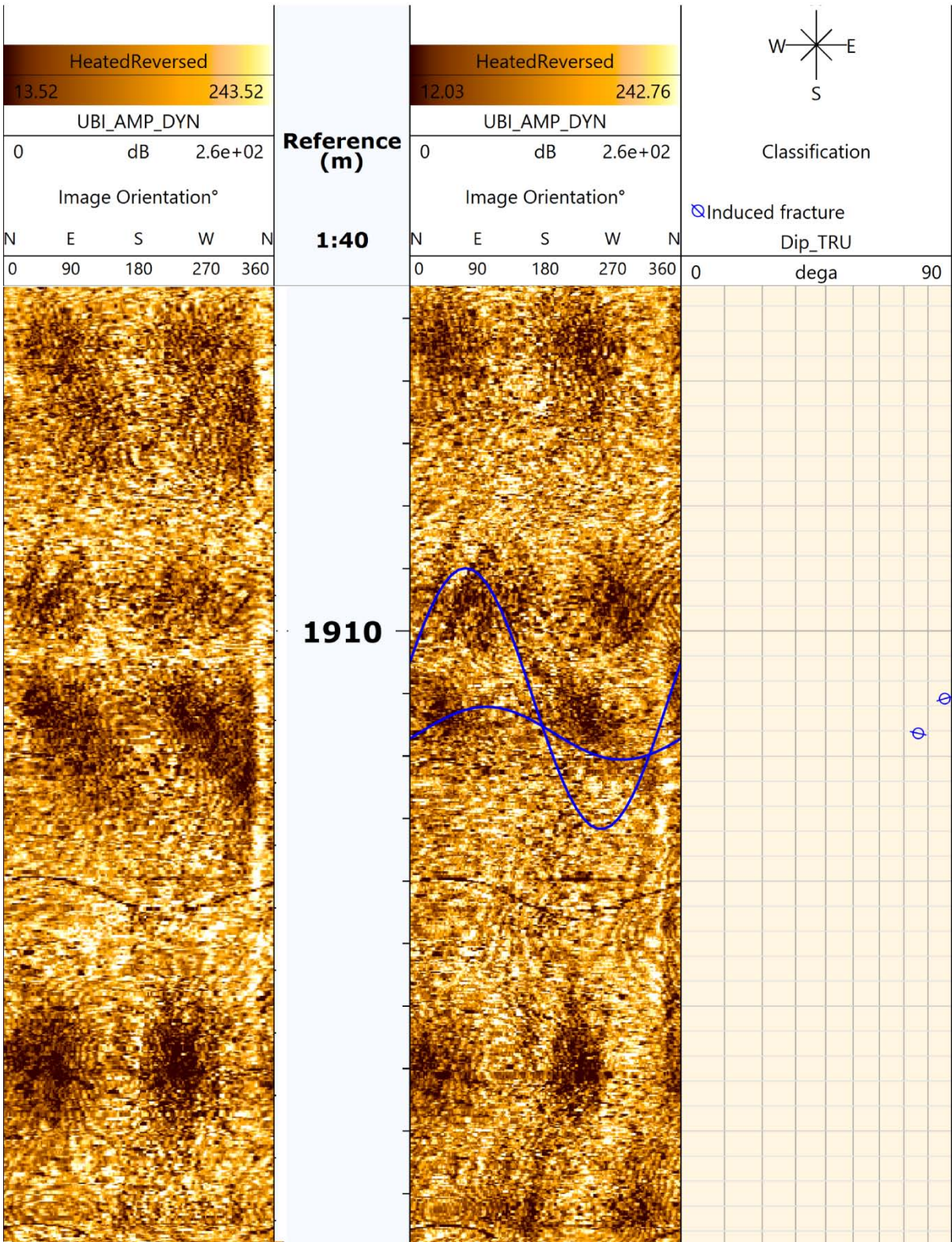




Figure S4:

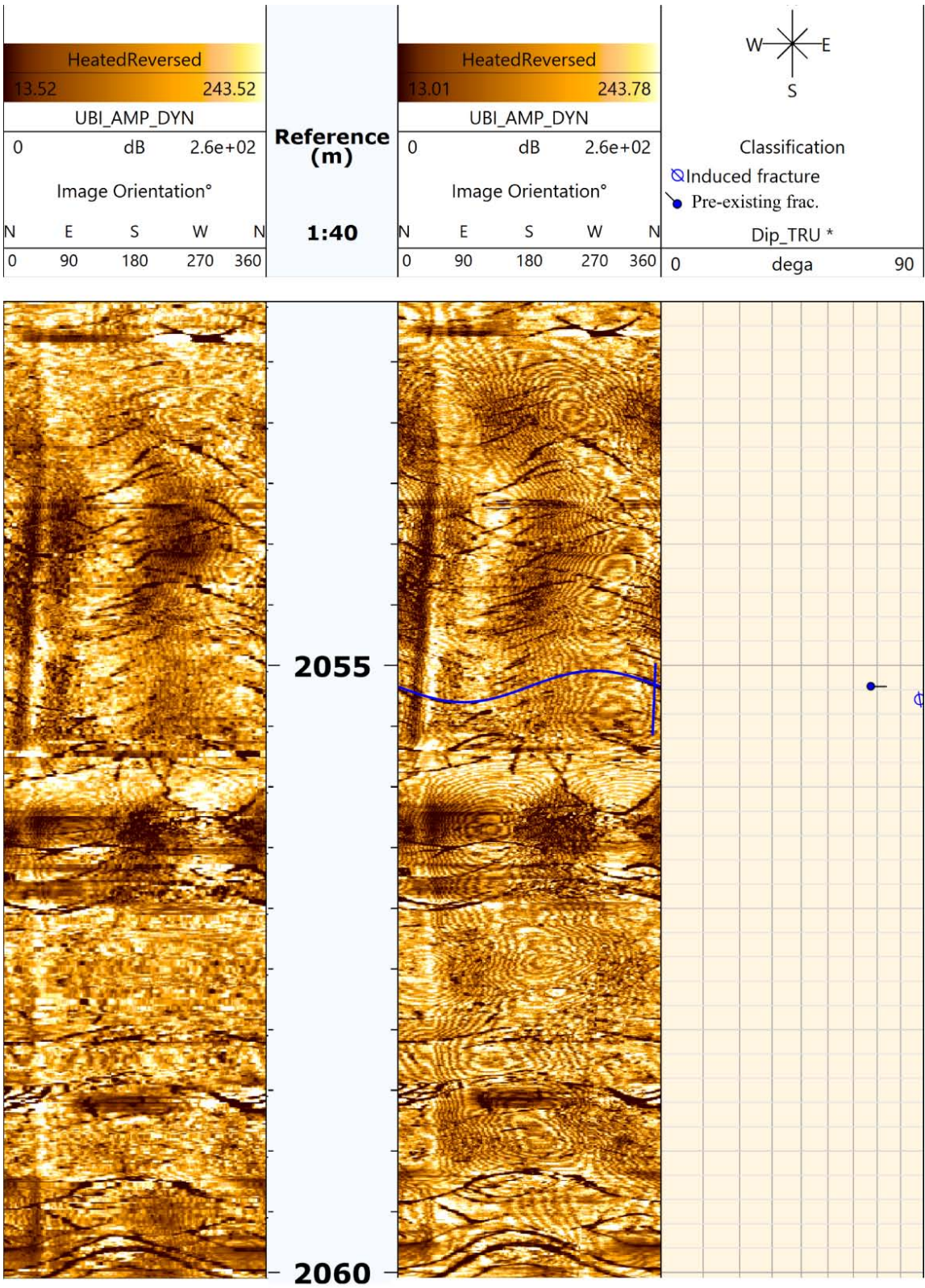




Figure S5:

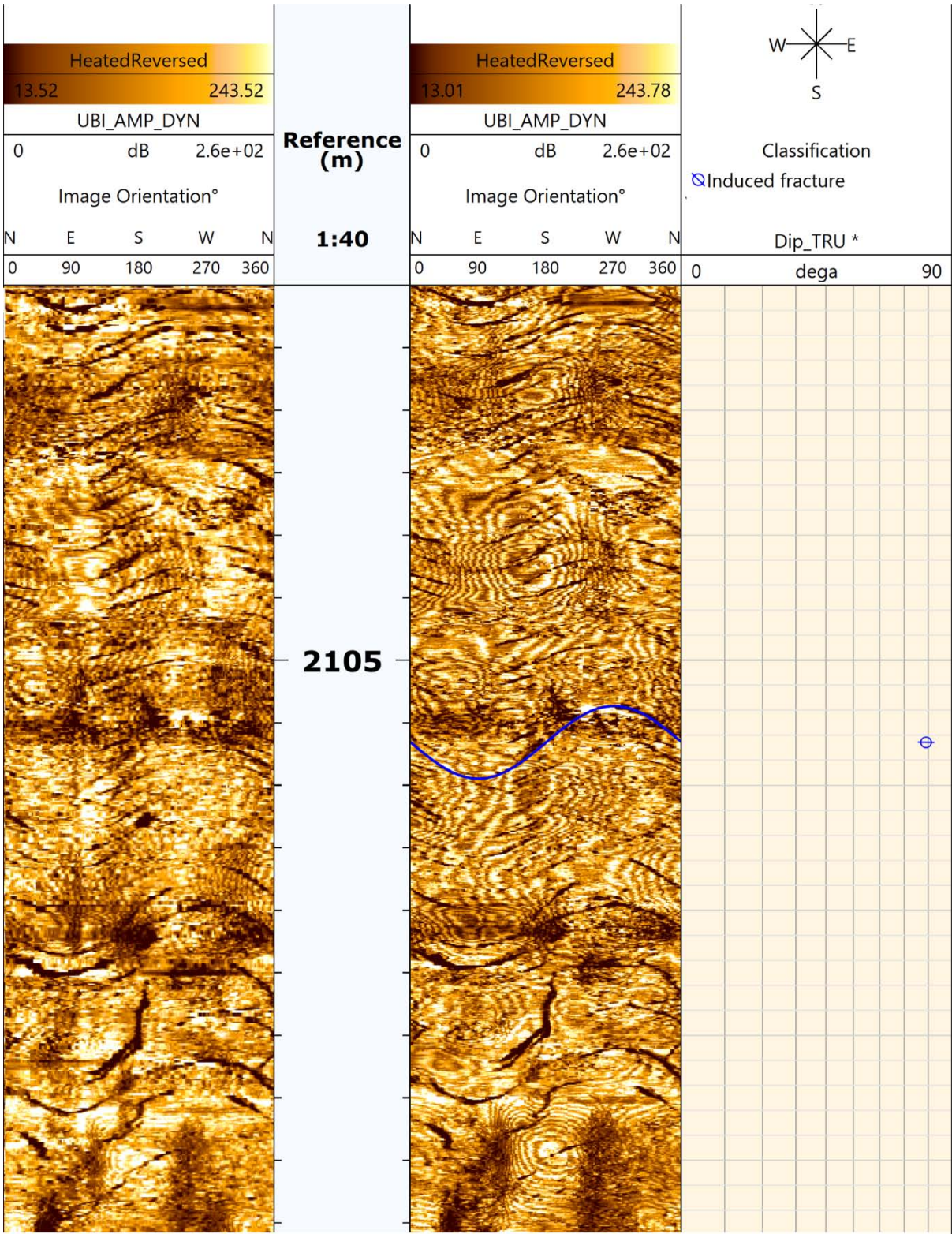




Figure S6:

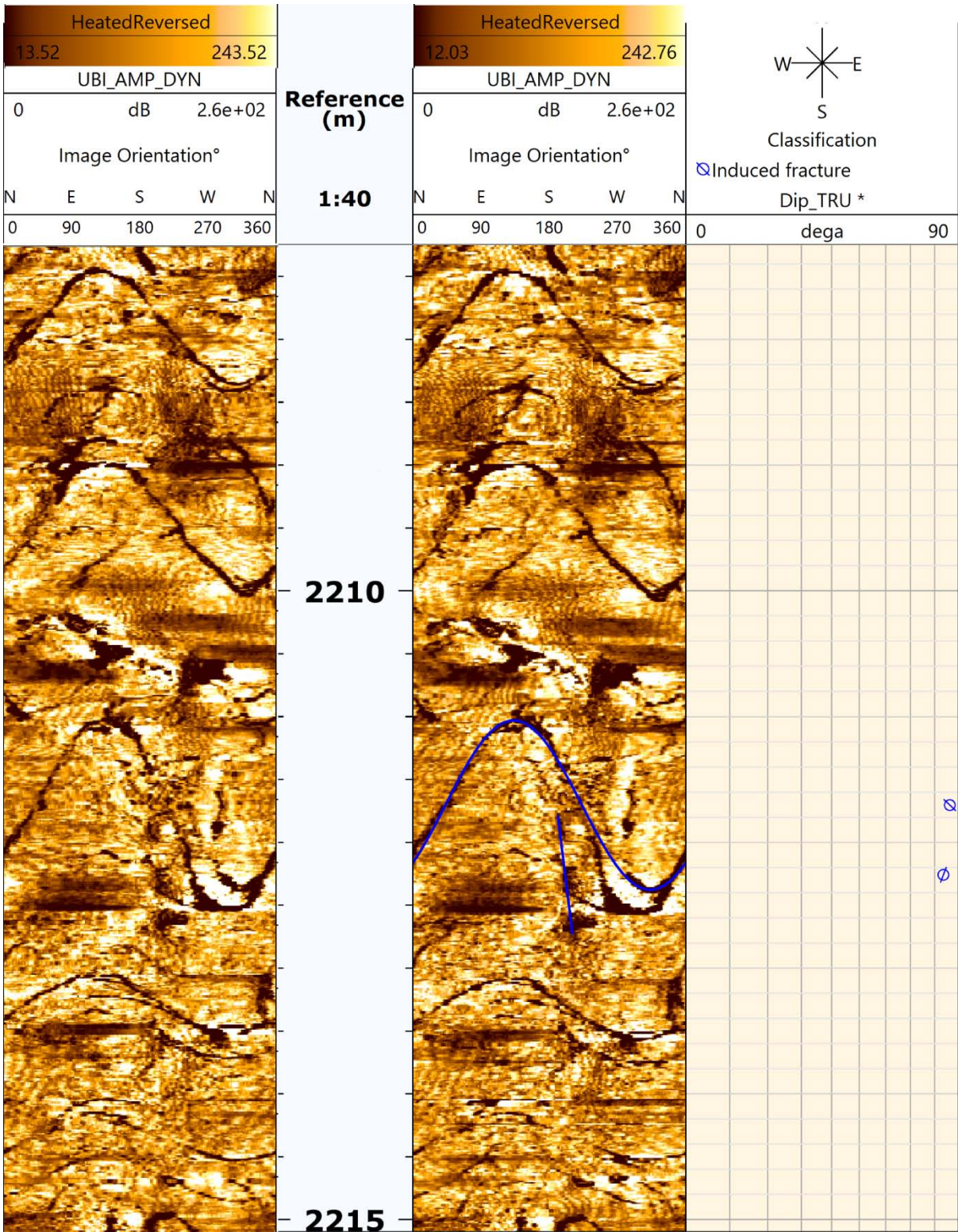




Figure S7:

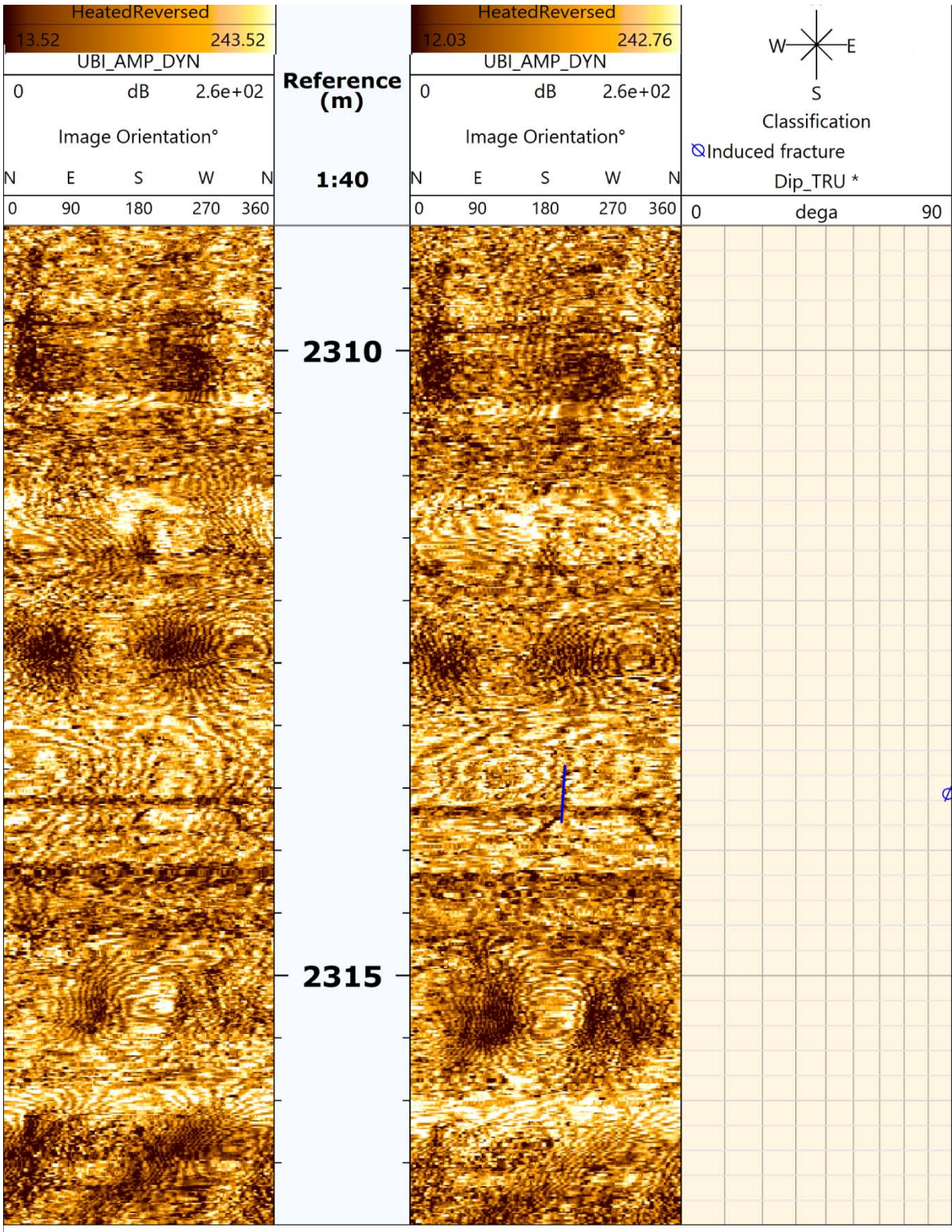




Figure S8:

